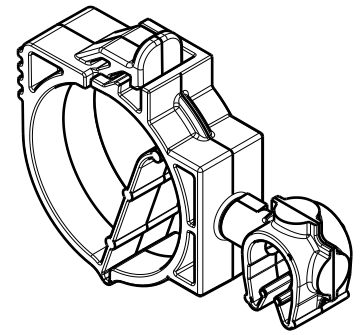
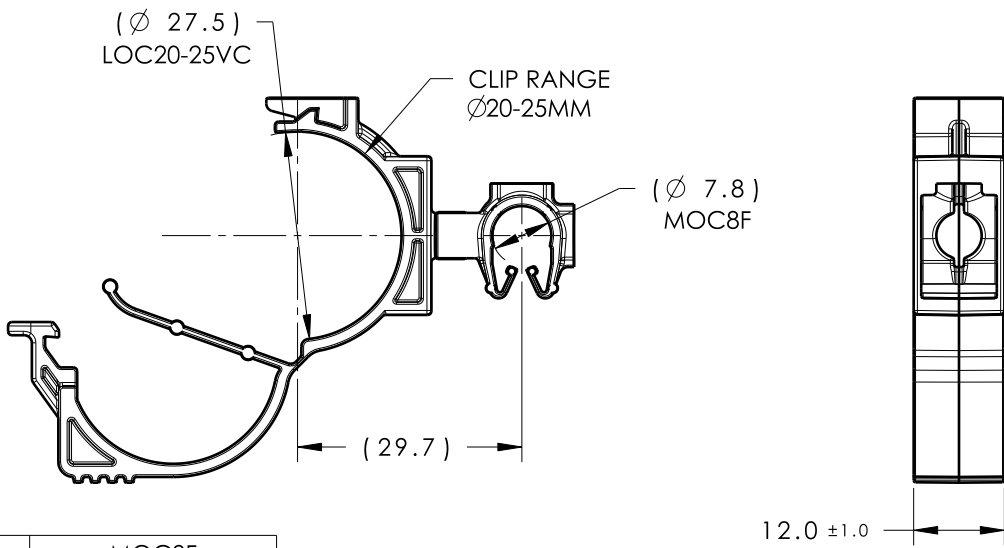
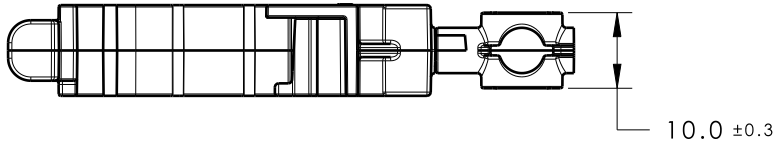
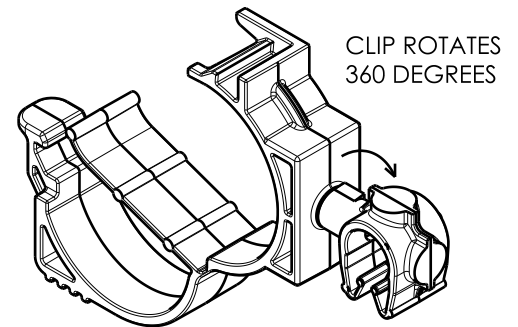


| Revision Level | | | Revision Record | Changed | Date | Approved | Date |
|----------------|----------------|------|-----------------|---------|---------|----------|---------|
| Drawing | State | Part | | | | | |
| 01.1 | Design Release | | SEE ECN# 013698 | KVH | 1/30/17 | CJR | 1/31/17 |



ISOMETRIC VIEW
CLOSED POSITION



CLIP ROTATES
360 DEGREES

| | |
|----------------|---------------|
| TYPE | MOC8F |
| HARNESS | 7.5MM - 8.5MM |
| HOSE | 7.0MM - 8.5MM |
| HARD PIPE/TUBE | 7.9MM - 9.0MM |

1. MAXIMUM PERCENT REGRIND PERMISSIBLE: 25%
2. MAX ALLOWABLE FLASH OR MISMATCH TO BE: 0.5mm
3. TUBE EXTRACTION FORCE (FROM CLIP) MUST BE GREATER THAN 80N (18LBS)
4. IN A DRY STATE <10% HUMIDITY AND A TEMPERATURE OF 40°F THE CLIP MUST BE CYCLED 5 TIMES AND SHOW THE CLIP STILL FUNCTIONS

01.1

| UNS-UNIVERSAL NUMBER SYSTEM | TYPE | MOC8F | | | LOC20-25VC | | |
|-----------------------------|--------------|-----------------|------------|-------|-----------------|-----------|-------|
| | | DRAWING | MATERIAL | COLOR | DRAWING | MATERIAL | COLOR |
| 156-01614 | MOC8LOC20-25 | 16-0316-000-CSU | PA66HIRHS | BLACK | 12-0631-051-CSU | PA66HIRHS | BLACK |
| 156-01734 | | | CELCON M90 | | | | |

| | | | | | | | | | | |
|---|-------------------------------------|--|--|-------|------------------------|--------------------|--|--------------|----------------|---------|
| Material SEE CHART COLOR: SEE CHART | Units | millimeters | The copyright of this drawing is reserved by HellermannTyton. It is issued on condition that it is not reproduced, copied or disclosed to a third party, either wholly or in part, without the consent of HellermannTyton. | Drawn | EJH | 1/29/16 | Article/Type-No | MOC8LOC20-25 | Scale | 1:1 |
| | Tolerance defined on each dimension | Approved | | EJF | 11/11/16 | Title | 20-25MM LOCKING OMEGA CLIP COUPLED TO 8MM MODULAR OMEGA CLIP | | Project Number | 16-0327 |
| | | HellermannTyton North America Web: www.hellermann.tyton.com | | | Drawing-No | PRODUCTION : Phase | Format | AH | | |
| | | | | | 16-0327-084-CSU | | Sheet | 1/1 | | |